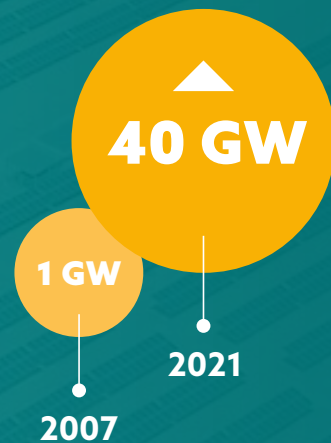


**SCHLETTER**  
The Solar Mounting Group

**THE SCHLETTER  
GROUP - SOLAR  
MOUNTING  
SYSTEMS  
YOU CAN  
TRUST**

# WE SET QUALITY STANDARDS AROUND THE GLOBE

For five decades, Schletter has been synonymous with industry-leading metal processing. From the humble origins as a family-owned business to our current position as one of the largest producers in the world, we've maintained the same dedication to quality and sustainability. With about 600 highly skilled employees and an organized network of distribution and service companies spanning the globe, we are one of the world's leading manufacturers of solar mounting systems.





# EXCEPTIONAL QUALITY: OUR PRODUCTS

When designing and manufacturing our solar mounting systems, we are not just thinking about sunshine. We are thinking about storms, heavy rainfall, snow loads and earthquakes. After all, these are the extreme stresses that a PV system must endure in all situations for 25 years or more.

The result is relentless focus on quality; from product development to the finished product, for which we only use high grade aluminum and steel. This quality standard is the reason why Schletter mounting systems are known around the world for their reliability.

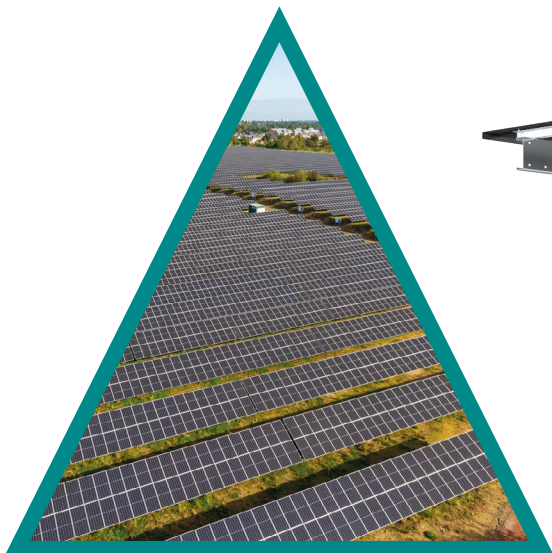
## OPEN AREA SYSTEMS

---

### ROBUST DESIGN AND EASY INSTALLATION: FOR ANY TERRAIN

Solar parks are an investment in the future of sustainable energy. However, the success of the investment is dependent upon the quality of the open area solar mounting solutions. In the end, the solar plant's overall performance is completely based on the reliability of the mounting systems. Mountings for solar plants need to be capable of withstanding challenging weather conditions. For a full return on investment, it's vital that the best mounting for solar parks is utilized.

That's why the Schletter Group only creates high-quality and durable steel solar mounting systems. These ground-mounted systems have a high load capacity, require little maintenance, are built to last, and have proven effective even in the world's toughest conditions.



## PITCHED ROOF SYSTEMS

---

### PARALLEL MOUNTING OR ELEVATED MOUNTING: **FOR ANY ROOF AND PITCH**

There are endless variations for pitched roofs. The sheer number of roof shapes and pitches make it challenging to install a solar panel system. Given the extensive range and dynamic modular structure of Schletter mounting systems, we're able to place solar panels on nearly any roof pitch. Better yet, we offer them for all of the PV models currently available on the market.

Due to the 25-year warranty on Schletter roofing products, the focus on our high quality standards is once again made clear.



## FLAT ROOF SYSTEMS

---

### BALLASTED OR FASTENED: **FOR ANY STATICS**

Schletter flat roof solar mounts are specially designed for quick and simple installation to matter the construction or structural condition. Our highly talented structural engineers carefully calculate the optimum design for your roof's unique shape, size, and slope. This ensures the loads are spread optimally over the building's structure while staying within the load limit. Our team takes all relevant building regulations into account in addition to the local wind rates and snow loads. Throughout the entire installation process, we're focused on mitigating the amount of work that's done to your roof. We accomplish this through extensive planning and intelligent design. This ensures your roof remains completely leak-proof and intact.


## TRACKING SYSTEMS

---

### STABLE AS A **FIXED TILT**

The Schletter Solar Tracking System is specifically designed to help you make the most of your solar energy system. Our industry-leading solar tracker effectively combines the advantages of the market's highest ground cover ratio (GCR) with our proprietary, specially designed principle of mechanical self-locking. You can capitalize on these benefits at any post and in any position.





Mounting a photovoltaic system requires more than a mere metal clamp. It needs a plan that has been thoroughly thought through and adapted to suit actual circumstances. It starts with initial soil or structural analyses and ends with tightening the very last screw.

We accompany our customers through the entire process. With our uncompromising quality standards at every stage of the project, we ensure that our top-quality products and solutions reach their full potential. This care and our holistic approach are an integral part of our company's DNA.





## OUR GLOBAL FOOTPRINT

### LOCATIONS AND SALES

With a vision to bring sustainable solutions for a seamless transition to renewable energy, the Schletter Group has maintained a long tradition of working for a brighter tomorrow both for the health of our planet and humankind. In fact, it's been a primary goal of the organization to synthesize economic progress and environmental sustainability. By perfecting mounting systems for solar panels and distributing them across the world, the Schletter Group is directly assisting in this process.

**SCHLETTER AUSTRALIA PTY LTD**  
Unit 4, 27 Williamson Road  
NSW 2565 Ingleburn

Tel.: +61 2 9426 7800

[www.schletter-group.com](http://www.schletter-group.com)

